

2007 AUXILIARY BOARD MEETING DATES

February 12	9:30 am	5th Floor Conference Room 2
March 12	9:30 am	5th Floor Conference Room 2
April 16	9:30 am	5th Floor Conference Room 2
May 14	9:30 am	5th Floor Conference Room 2
June 11	9:30 am	5th Floor Conference Room 2

Please remember that the Board, the Business Manager, the rest of the Auxiliary and Volunteer Services are here as an additional resource. If we can help in any way, we will!

The PULSE is published by the Overlook Hospital Auxiliary, Summit, NJ 07901

Rachel Weinberger, President	rachelweinberger@msn.com	908-522-2198
Marianna Hurrell, Editor	mhurrell5@comcast.net	908-277-1517
Madonna Lee, Business Manager, Production	madonna.lee@atlantichealth.org	908-522-2004
Carol Aronson, Webmaster	craronson@comcast.net	908-273-7291

For more information about the Auxiliary please visit us at www.ohaux.org

Next Pulse DEADLINE: APRIL 16

Overlook Hospital Auxiliary
99 Beauvoir Avenue
Summit, NJ 07901

PULSE



Volume 27, Number 3

January - March 2007

ONE TWIG CELEBRATES FIFTY YEARS OF GIVING

Too often we underestimate the power of a touch, a smile, a kind word, a listening ear, an honest compliment, or the smallest act of caring, all of which have the potential to turn a life around.

-- Dr. Felice Leonardo Buscaglia

As most auxiliary members know, Overlook Hospital's Twigs have been a major source of volunteer gift giving for more than fifty years. These groups are responsible for raising money through a myriad of projects and events throughout each year, donating thousands of dollars and countless hours to the many who are served by Overlook's health care system.

No one is quite sure when the first Twig was formed, but it is possible that SH Twig #24 was the first. Not only can it claim pioneering roots, it is perhaps the oldest Twig still in existence today; (mid-1950's) and its contributions over these many years are not soon forgotten.

Marie Hickey, a 34-year member of SH Twig #24, remembers Marie Tansey as one of the Twig's founding members. Marie is the mother of Dr. William A. Tansey, a cardiologist here at Overlook Hospital. There were 20 members in its original group, according to Mrs. Hickey's best recollection. In the beginning, ladies gathered at each other's homes to meet and plan projects. Most of their contributions were labor intensive, such as decorating holiday trays throughout the year and delivering them to patients' rooms. Fall, winter, spring and summer found members preparing these creative trays to lift the spirits of everyone who came into the hospital—visitors as well as patients.

Another idea originated and implemented by SH Twig #24 were Pediatric Carts. Bee Mullen, still an active member of the Twig, was delegated to New York to shop for items to make the carts interesting and fun for children. Puppets, balloons, books, games and puzzles were just some of the items circulating throughout the Pediatric wing each day. The women of SH Twig #24 made it their mission to spend time with sick children, comforting them with activities delivered with love during their hospital stays. The

members continued this popular and invaluable task for many years, touching many lives in the process. This was volunteerism at its best.

In-house activities included the distribution of "Pinky Dolls" made and delivered by members to each child who entered the hospital as a patient. Hundreds were made and the gifts were so popular they continued to be distributed for many years.

Not all of the work contributed by SH Twig #24 took place within the hospital. Each year the Twig sponsored a cocktail party with 100 to 125 guests. In addition to this much-anticipated event, the parties raised significant funds for Overlook Hospital. Many hours were spent planning, and members still reminisce about their success.

As the years progressed, the Twig moved into many different roles, such as assembling Doctors' charts and raising money for the Chaplain's office. Mailings, greeting visitors, the wheel chair brigade and supplying rattles for babies as they left the hospital were just a few of the many tasks performed regularly.

Louise Gili is the current Chairwoman of SH Twig #24. She heads an enthusiastic group of eight members who still today do what they can to raise money for the hospital. Two original members, Lynn Tully and Bee Mullen, continue to be active in the Twig. Although a frigid day or a snowstorm might once in a while deter them, the eight remaining members can still be found at the hospital as often as possible, volunteering their time and effort to the many who appreciate the kindnesses they provide. They are an example to Twigs who have followed in their footsteps and are remembered and appreciated by the institution they have served so well for so long.



A LETTER FROM THE PRESIDENT

Dear Auxiliaries:

My last letter was written when it was still a very mild late fall – now we're bundled up in our warmest clothes and my kids are desperately hoping for a snow day! Apparently if you wear backwards, inside-out pajamas, and sleep with a spoon under your pillow, snow is more likely... who knew?!

I hope you all had joyous, relaxing and healthy holidays, and are rested enough to once again tackle the important work you do for the Auxiliary. The Wish List continues to be updated regularly, with many opportunities for donations of all kinds, and at all levels.

Have you been to the Hospital recently? The new lobby is wonderful — light and welcoming, staffed with smiling helpful people. It goes a long way towards putting people at ease, making it easier to find one's way around.

The **Gift Shop** and **Bloom** expect to open in mid-March. Liza Tulloch and the staff are busy getting everything in place. Check the website for updates on its grand opening date, and plan to stop by and shop.

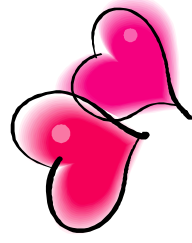
The Spring Luncheon is approaching, most likely with a May date. Terry Andrews and Amanda Ford generously volunteered their SU Twig #33 to organize the luncheon. Stay tuned for more information.

Our Professional Development Scholarship program is well under way, with two awarded so far. We received lovely, gracious thank you notes from the recipients, who are delighted to have help pursuing their studies. Many thanks to Maryanne Menk, for championing this cause for so long. Maryanne has stepped down as Scholarship Chair, but promised to provide annual updates on the program.

I'd like to especially recognize Marianna Hurrell, Editor of the *Pulse*, and Madonna Lee, Auxiliary Business Manager. Many days of hard work went into creating the November/December issue. It is now produced entirely in-house, and Madonna is utilizing new software in order to assist Marianna with layout and production. The result was terrific and we look forward to many future issues.

The Hospital continues to be enormously grateful for all you do for both the Auxiliary and the Hospital.

Rachel Weinberger
rachelweinberger@msn.com



SU Twig #4



On January 15, SU Twig #4 hosted a *Golden Globes Party* at the home of Maureen Griffith. The price of admission for each guest was a \$25 Target gift card. The cards themselves will be donated to Overlook's HealthStart Clinic. This will allow families who use the facility to personally choose items they need. We are proud to report that we collected gift cards totaling \$1,275!

To add to the glamour of our *Golden Globes Party*, cosmopolitans were the beverages of choice. Three Bobbi Brown make-up artists, courtesy of Neiman Marcus, donated their talents to the event, supplying makeovers to guests. In addition, a gift package was raffled, courtesy of Bobbie Brown cosmetics. Because of our success, this annual ladies night will become a tradition for SU Twig #4.

Special thanks go to our Golden Globes Committee: Maureen Griffith, Meredith Guida, Rebecca Kranzler, Liz Martin, Valerie Minton and Chrissy Munn.



Members of SU Twig #4 gather for their Golden Globes Party. (Left to right) Anne St.Clair, Meredith Guida, Chairwoman, Meghan Duttonhofer and Janie Garrett, Treasurer.



Staff of the HealthStart Clinic accept gifts from NP Twig #2 for distribution to needy children. (Left to right) Jill Herber, Jo Vargo, and Lisa Kielblock, Staff Nurses, Bethy Carnicella, Business Coordinator and Delia Burgos, Administrative Assistant.

NP Twig #2

On Wednesday, December 6, NP Twig #2 sponsored a lovely trip to Winterthur. We viewed a variety of outstanding Christmas trees, each with a different theme. Decorative trees included; a gracefully adorned tree of fresh flowers and a Victorian themed tree, to name just two of the creative and unique displays.

Our Twig members collected fourteen presents to be given to the neediest children in HealthStart according to their ages. It was fortunate for us to be able to provide some of these children with special gifts for the holidays.

NP Twig #2 is investigating other interesting locations to visit, and we look forward to many more outings in the future.

MORE TWIG HAPPENINGS

SU Twig #2

SU Twig #2 gathered together on December 11 to assemble and deliver luminaries. It was a bright, beautiful winter day, and the well attended event helped to get everyone into the holiday spirit. This year, SU Twig #2 received a record number of orders for luminaries, which we were happy to fill. This project benefits Overlook Hospital and is underwritten by Lois Schneider Realtor.



Members of SU Twig #2 preparing luminaries for delivery. (First photo left to right) Jennifer Feltes, Linda Predpelski and Lisa O'Hearn. (Second photo left to right) Adrienne Reid, Becky Shamim, Tricia Cassin, Marite Robinson, Caroline Moore and Tammy McLean.

SU Twig #3

SU Twig #3 has been very busy of late. We have recently donated \$7,000 from cookbook sales and our annual *Ladies Night Out*. December sales were our most profitable ever due to participation in the many Holiday Boutiques. We are currently planning this year's *Ladies Night Out* as well as the Auxiliary Spring Luncheon. If anyone is interested in helping to plan the luncheon, please let us know.

Enjoy this Valentine's Day Menu from **Great Gatherings**. If you would like to purchase a cookbook or know of someone who does, email us at:

Fordclan@comcast.net or
Cliff.Andrews@msn.com.



SAVE THE DATE

SU Twig #10 will hold its annual **Progressive Dinner** on **April 21**. The proceeds from this event go directly to Overlook Hospital by supporting the Auxiliary Wish List.

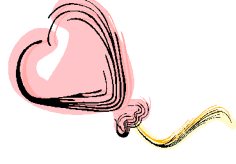
2006 TWIG AND COMMITTEE FINANCIAL GIFTS

Art at Overlook	\$ 2,049
Cookbook	7,000
Gift Shop	20,000
CH Twig 15	4,800
NP Twig 2	1,400
Twig 7	400
SH Twig 14	1,700
Twig 17	2,800
Twig 22	2,500
Twig 24	800
Twig 27	1,320
SU Twig 2	5,500
Twig 4	1,000
Twig 9	2,800
Twig 10	10,000
Twig 18	1,100
Twig 19	1,500
Twig 22	1,200

The Overlook Hospital Auxiliary would sincerely like to thank the Twigs and Committees for their contributions to the organization during the 2006 calendar year. Your financial support is beneficial to the entire Overlook community and an invaluable asset to the Auxiliary. We would also like to thank all of the Auxiliaries who donate their time as volunteers in the hospital. The Auxiliary values your participation and hopes you have enjoyed your service to the hospital.

Julie Planck
General Treasurer

*Happy
Valentine's Day*



VOLUNTEER SERVICES OPPORTUNITIES

The **Messenger Room** continues to need additional help! Our duties include: running errands, delivering patient mail/flowers, miscellaneous mailing projects, and sorting Doctor's mail! We are in need of volunteers, especially on Monday and Tuesday afternoons. If any adult volunteers are interested in Saturday mornings from 8 a.m. - 12 Noon, we would be thrilled to have you! Adult supervision is required for the Messenger Room to be open for service. Messenger Room hours are Monday through Friday from 8 a.m. - 4:30 p.m.



- The **Valerie Center** is in need of clerical and filing help on Tuesdays between 9 a.m. and 3 p.m.
- Tumor Registry** is in need of data entry help any afternoon during the week.
- The **Foundation** needs clerical and mailing help any day from 9 a.m.- 4 p.m.
- The **Information Desk** has 4:30 - 8 p.m. openings Tuesdays through Thursdays. If you like Customer Service, this is the job for you. We provide on the job training for computer, phones, and directional information.
- Central Access** has openings for the front desk any afternoon or Tuesday and Friday mornings. You will be trained to register patients, assist the front reception desk and compile informational packets.
- Human Resources** requires assistance any day except Tuesday for light clerical, phones and errand help.
- Endoscopy** needs volunteers for discharging and helping to make up stretchers.

If any of these positions are of interest to you, please contact Trish at extension 2099 or Kristen at extension 2702.

NATIONAL VOLUNTEER WEEK April 15 - 21

PEDIATRIC ORIENTATION

Pediatric Orientation is a program that invites kindergarten students into the hospital to learn about the health care experience. Children from local schools attend and participate in hands-on activities. This allows them to learn about various medical procedures and pieces of equipment, such as x-rays and stethoscopes, as well as about germs and the importance of hand-washing.

The Child Life Department runs this program and is looking for volunteers. If you're interested in helping with any of the sessions, please look at the schedule included and contact our department.

**If interested, please call Kelly or Maura at 522-5200.
Thank you!**



January - June Schedule

(Thursdays only)	
January 11:	9:30 - 10:30
January 18:	9:30 - 10:30
January 25:	9:30 - 10:30 & 1:00 - 2:00
February 1:	9:30 - 10:30
February 8:	9:30 - 10:30 & 1:00 - 2:00
February 22:	9:30 - 10:30 & 1:00 - 2:00
March 1:	9:30 - 10:30 & 1:00 - 2:00
March 8:	9:30 - 10:30 & 1:00 - 2:00
March 15:	9:30 - 10:30 & 1:00 - 2:00
April 5:	9:30 - 10:30 & 1:00 - 2:00
April 19:	9:30 - 10:30 & 1:00 - 2:00
April 26:	9:30 - 10:30 & 1:00 - 2:00

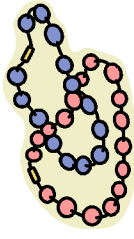
TWIG HAPPENINGS

SH Twig #17

SH Twig #17 will again host a **Jones NY Coat & Sweater Sale** on Tuesday, February 20 from 8 a.m. - 4 p.m. in Wallace Auditorium. This sale always offers a wide selection of coats and jackets as well as a smaller selection of gloves, socks, scarves and sweaters. Members of the Twig will be available throughout the day to assist you with your fashion questions.

SH Twig #27

Valentine's Day arrives on "Cupid's Wing" February 14. In honor of this momentous occasion, SH Twig #27 will host a jewelry sale with **D&D International Jewelers**. No strangers to hospital fundraising, they will assist you in choosing from a wide array of jewelry for that special someone *or* as a treat for yourself.



The sales event will take place in Wallace Auditorium on February 14 from 9 a.m. to 5 p.m.

SU Twig #1

SU Twig #1 - The Gift of Life continues a busy schedule each month at Overlook Hospital with volunteers supplying educational materials and Organ & Tissue Donor Registration cards to visitors and employees.

SU Twig #1 members work with The Sharing Network of NJ, the organ and tissue procurement organization for the state. We also volunteer at Overlook Hospital at local and hospital medical functions. One such function, the Overlook Cardiac Health Fair, will take place on February 10.

The Sharing Network recently presented Overlook Hospital and Morristown Memorial Hospital each with National Medals of Honor for having high conversion rates of potential donors of organs and tissues.

In February, our Twig will provide two Wine Baskets for a silent auction at the Sharing Network's Heritage Dinner. The proceeds will be donated for educational endeavors in honor of two friends of our Twig, Dr. Dorian Wilson and Dr. Sham Mulgaonkar, both Transplant Surgeons.

Members of SU Twig #1 will attend a Brain Surgery viewing on-screen in Forbes Auditorium at Morristown Memorial Hospital. This presentation, sponsored by the Liberty Science Center, will feature live surgery being performed at Overlook Hospital on March 15.

March will be a time of preparation for April (National Donate Life Month). Our members will attend council meetings in 13 towns in our Overlook Hospital area. We will attend meetings to accept Proclamations from Mayors and City Councils, acknowledging April as National Donate Life Month.

April will find our members tying Green Ribbons around trees in those 13 towns in order to increase awareness of the need for Organ & Tissue Donors.

To become a member of SU Twig #1 or to receive information about organ and tissue donations, please call Lenore Ford at 973-984-2174.