

2008 AUXILIARY BOARD MEETING DATES

March 10	9:30 a.m.	5th Floor Conference Room 3
May 12	9:30 a.m.	5th Floor Conference Room 3
June 9	9:30 a.m.	5th Floor Conference Room 3

Please remember that the Board, the Business Manager, the rest of the Auxiliary and Volunteer Services are here as an additional resource. If we can help in any way, we will!

The *PULSE* is published quarterly by the Overlook Hospital Auxiliary, Summit, NJ 07901

Terry Andrews, Co-President	terryr655@msn.com	908-598-0502
Amanda Ford, Co-President	fordclan@comcast.net	908-277-3019
Marianna Hurrell, Editor & Cover Story	mhurrell5@comcast.net	908-277-1517
Madonna Lee, Business Manager, Webmaster & Pulse Layout	madonna.lee@atlanticealth.org	908-522-2004

For more information about the Auxiliary please visit us at www.ohaux.org

Spring Pulse DEADLINE: March 10

Summer Pulse DEADLINE: June 9

Fall Pulse DEADLINE: September

Overlook Hospital Auxiliary
99 Beauvoir Avenue
Summit, NJ 07901



PULSE

Volume 31, Number 7

Winter 2007-2008

A DAY IN THE LIFE OF THE OVERLOOK HOSPITAL AUXILIARY ONE EMPLOYEE'S CONTRIBUTION

For over ninety years, the Overlook Hospital Auxiliary has existed as an organization of women whose main focus is to aid the hospital monetarily and often spiritually through a myriad of volunteer efforts. Although many long-standing members are aware of its inner workings, some newer Auxiliaries may not realize what is entailed in the day-to-day administration and management of the Auxiliary itself.

Members have given of their time and talents to the hospital since the Auxiliary's inception in 1916. Through the years its function has evolved to include everything from supplying a traveling gift cart, to large-scale fundraisers, such as the Overlook Hospital Auxiliary Kitchen Tour and sponsorship of Donor Awareness Symposiums. The organization's board meets to discuss treasury reports, upcoming events and future ideas. Auxiliary membership exceeds 550 with twenty-six Twigs, each sponsoring its own functions and fundraising efforts. A few examples of volunteer efforts include: distribution of luminaries at Christmastime, and sponsorship of the charitable social event "Derby Day." Some Twigs sponsor events such as trips to historical destinations; and some confine their efforts within the hospital itself, providing "love pillows" to post-operative patients, or booties and blankets to the maternity department.

In order for the Auxiliary to run smoothly, though it relies solely on volunteers for its fundraising efforts, someone is needed to oversee the entire operation. The hospital employs one person to do the job of many. Madonna Lee, the Auxiliary's Business Manager, handles with ease the inner working of the organization each day. To look around her office, you will observe neatly displayed family photos, a candy jar for visitors, and a calendar with the words "Angels Are Everywhere." She certainly is that for anyone who has witnessed her in action. At her fingertips, she can conjure up facts and figures at a moment's notice. Her telephone rings frequently with members calling for information on everything from treasury figures to scheduling of volunteers. Sometimes they call just to say hello.

Madonna began working as the Business Manager for the Overlook Hospital Auxiliary in 2005. Her background includes 15 years as the Office Manager for *The Junior League of*

Summit as well as other volunteer and non-profit positions. Her functions include working hand in hand with Volunteer Services as well as coordination between Auxiliary members and Twigs. In addition, she maintains the website and the database, serves as the liaison between the Auxiliary and the Foundation, and assists the Editor with newsletter layout and design. On any given day, you will find her logging donations, accumulating checks and coordinating the Agendas for board meetings.

In addition to administration, Madonna maintains Overlook's "Wish List" which is critical for future contributions, and is the in-house coordinator of the Art At Overlook Program. Her knowledge of "hospital activities" on a daily basis seems daunting to any onlooker. Volunteers pop in and out of her office armed with questions, problems or paperwork; and though not her responsibility, she always seems to find the answers. Veteran Twig members look to her when organizing events, knowing full well she will work in concert with them until the job is done. Efficiency is paramount to her job.

Her family includes her husband, two grown children, and one adored grandchild. She is reticent to discuss herself in any way but offers her recent accomplishment as a Eucharistic Minister at her local church, and her membership in the *Respect Life* Ministry. Those activities speak clearly of the person she is and one need only watch her in action with anyone who seeks her help to realize her valuable contributions.

To list all of her daily activities, one would need more space than this newsletter provides. But the success of the Auxiliary, its responsibilities, its growing function as a significant fundraiser, and its supporting role to benefit Overlook patients could not be achieved at this level without her superior commitment to the organization. So do not be surprised if you walk into her office and find her sharing a smile and a kind ear with an octogenarian volunteer. They wouldn't trade her—and neither would the Auxiliary.♥

A LETTER FROM THE PRESIDENTS

Dear Auxilians:

Happy New Year! We hope everyone enjoyed time with family and friends for the holidays. As much as we love the hectic pace of the season, it's nice to get back to a normal routine.

The Auxiliary Board has been working very hard on our next major fundraiser. In lieu of our Kitchen Tour this year, we have been asked by the Fortnightly Club of Summit to partner in their Designer Show House, taking place this October. We have been given the task of providing docents for this wonderful event and we hope that all of you will participate. This is an exciting opportunity for twigs to come together for a worthwhile cause. The month-long event will require many Auxiliary volunteers to ensure that it runs smoothly. A letter will be sent out asking for Twig members to commit to a weekly shift.

In addition, we are in need of a Twig to chair our annual Spring Luncheon in May. It has been a great success in the past and gives those involved the opportunity to create an enjoyable and lovely event, directly benefiting Overlook Hospital.

Finally, thank you to all of the Twigs who make such a difference. We are amazed at the dedication each of you puts forth in both monetary and volunteer capacities. You should be proud of the work you do.

We look forward to 2008 and know it will be another banner year in the life of the Overlook Hospital Auxiliary.

Sincerely,

Terry Andrews
terry655@msn.com

Amanda Ford
fordclan@comcast.net



Happy Valentine's Day

SAVE THE DATES

*Auxiliary Spring Luncheon
May 16
Baltusrol Golf Club
Springfield, NJ*

Thank you to Jeanne Lawler and SU Twig #3 for volunteering to chair the 2008 Spring Luncheon. Your support is invaluable and greatly appreciated.

*The Twin Maples Centennial Show House
October 2008
Docent Volunteers Welcomed*

*For information please call:
Amanda Ford (908-277-3019)
Terry Andrews (908-598-0502)*

Please order your Valentine flowers from Bloom 908-522-2117

TWIG HAPPENINGS

SU Twig #2

Summit Twig #2 held their Luminaria assembly day on December 3. The weather cooperated and everyone worked hard to assure that the assembly went smoothly. Proceeds from the sale purchase items from Overlook's Auxiliary *Wish List*. Shown busily assembling Luminaria are Danielle Maloney, Tammy McLean, Sue Britt, Regina Daly & Nora Holley.

SU Twig #4

SUMMIT TWIG #4 PARTNERS WITH THE JUNIOR LEAGUE OF SUMMIT

On Saturday, December 1, members of the Overlook Hospital Auxiliary's Summit Twig #4 partnered with the Junior League of Summit (JLS) to decorate the Pediatric Playroom and floor for the holidays. The JLS Pediatric Playroom initiative is run by Paige McInerney of Chatham. In addition to creating crafts and games to entertain young patients, JLS volunteers often decorate the playroom seasonally to create a happy environment. This year, SU Twig #4 came together with the JLS to bring holiday cheer to patients, families and staff of the Pediatric Floor. The Twig purchased a new nine-foot artificial tree along with various Christmas and Hanukah decorations for the Pediatric Playroom. Working closely with Erika Nardini, Child Life Specialist at Overlook, SU Twig #4 also stocked the arts and crafts supplies for the Playroom.

SU Twig #4 was conceived in 2004 by a group of friends from Chatham, New Providence and Summit. This year's chairwoman of Summit Twig #4 is Amy Donohue of New Providence. As mothers in the community, the Twig's primary mission is to enrich the lives of women and children who visit Overlook Hospital. Many of its members are graduates of Summit High School: Meredith Mixon Guida ('90), Maureen Dwyer Griffith ('89), Rebecca Balchunas Kranzler ('91), Elizabeth Gaynor Martin ('89), Valerie Hally Minton ('90), Anne Kelligrew St.Clair ('90) and Dr.

Laura Zimmermann ('90). Some members are also alumnae of Lincoln-Hubbard School in Summit. Summit Twig #4's Annual Golden Globes fundraising get-together to benefit the HealthStart Clinic at Overlook Hospital is planned for January.



Pictured are: Katrina Walsh, Marianne Speni, Rebecca Kranzler, Dr. Laura Zimmermann, Virginia Cepeda, Anne St.Clair and Paige McInerney.

TWIG HAPPENINGS

CH Twig #15

Chatham Twig #15 is pleased to announce a contribution of approximately \$6,000 to meet various items on the Overlook Hospital's "**Wish List**". CH Twig #15 will make donations to the Pediatric and Oncology departments, specifically donating a portable electronic vital signs machine and self-help books.



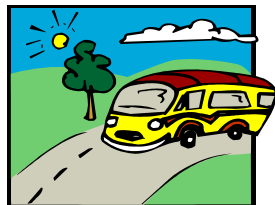
CH Twig #15 is comprised of 57 members, all of whom are residents of the Highlands neighborhood located in Chatham Township. This Twig raises money for Overlook Hospital through neighborhood gatherings and events, such as the annual Block Party, Christmas Luminaria and the Spring Party. This year's Spring Party theme was "Mardi Gras" and it featured a Silent Auction. Auction items included many luxury baskets, golf outings, and vacation homes, all donated by the Twig members. The evening was a huge success and a lot of fun as well!

We recently held our Luminaria Assembly, selling over 300 kits that included the folded bags assembled with sand and candles. Our neighborhood is a beautiful sight all lit up on Christmas Eve.

CH Twig #15 is a wonderful organization that fosters great community spirit in the Highlands neighborhood. We look forward to continuing to serve and raise money for Overlook Hospital.

NP Twig #2

BUS TRIP PROVIDES DONATION FOR OVERLOOK HOSPITAL WISH LIST



On October 17, New Providence Twig #2 sponsored a bus trip to Kykuit and Sunnyside in Tarrytown, NY with lunch at the Sunset Cove Restaurant. The weather was perfect, the tours and lunch very enjoyable, and everyone who attended had a good time. The proceeds from the trip are being used to purchase items on the Overlook Auxiliary Wish List. This includes a donation to the prescription fund for the HealthStart clinic and the purchase of trash receptacles for medication carts in the Emergency Department.

For more information regarding NP Twig #2 and their future activities, please contact Judy Campbell at 908-464-0139.

**VOLUNTEER NEEDED
GIFT SHOP LIASION**

- ♥ Provide communication between the Gift Shop and the Auxiliary Board.
- ♥ Assist Gift Shop Manager and volunteers.
- ♥ Have Fun!

TWIG HAPPENINGS

SU Twig #1

**THE GIFT OF LIFE SYMPOSIUM - A RELIGIOUS, PERSONAL AND
CLINICAL PERSPECTIVE ON ORGAN AND TISSUE DONATION**

To coincide with Donor Sabbath, Overlook Hospital Auxiliary's Gift of Life Twig and the New Jersey Organ and Tissue Sharing Network (NJ Sharing Network) hosted a program entitled "**The Gift of Life Symposium - a Religious, Personal and Clinical Perspective on Organ and Tissue Donation**" on Friday, November 9th, at Overlook Hospital. More than 120 members of the clergy and community attended this educational event.

After a warm welcome from Dr. Norman Luka, Medical Director of Clinical Affairs, the program included presentations from Rabbi Avi Friedman of the Jewish Community Center of Summit, Reverend George Blackwell of the Good Neighbor Baptist Church in Newark, and Edmund Luciano, Deacon and heart transplant recipient. Rabbi Friedman spoke of the various [Jewish viewpoints on donation](#), while Reverend Blackwell's presentation identified religion as a major source of support for families who have lost loved ones. Deacon Luciano began his presentation with facts about religion and donation and then revealed to the audience that he is a heart transplant recipient of only 6 months.

In addition, Overlook psychologist, Rosalind Dorlen, a living kidney donor, and her husband, David, a kidney recipient, discussed their participation in a 4-way kidney exchange, giving David his second chance at life. William Reitsma, RN, Clinical Director of NJ Sharing Network was also on hand to provide information regarding recent developments in donation and up-to-date clinical statistics. Many questions were directed to Mr. Reitsma during the Q&A portion of the program.

Those who attended the Symposium scored the program a 4 overall, which is the highest rating for this event. Members of the clergy planned to introduce donations to their congregations and would be calling NJ Sharing Network for more information in the near future. This changed the minds of many about organ donation and attendees vowed to encourage friends and family to become donors.



Rabbi Friedman gave a moving presentation about the Jewish Perspective on organ donation.

VOLUNTEER SERVICES

WELCOME SANDI!

The Volunteer Department would like to welcome Administrative Assistant **Sandi Goerner**. Sandi joined the department on January 14th and will be running the day to day operations. She will work fulltime, Monday through Friday, so please take time to introduce yourself when you're on the 8th floor. Sandi would love to familiarize herself with all of the fabulous volunteers.

VOLUNTEER OPENINGS

AMBULATORY needs assistance in their reception/waiting area on Mondays and Wednesdays from 6 a.m. - 12 p.m., 12 p.m. - 5 p.m., and on Fridays from 6 a.m. - 10 a.m.

BLOOM would appreciate assistance most days, training provided.

ENDOSCOPY openings for discharges and stretcher preparation are available.



The **FOUNDATION** would appreciate clerical and mailing help any day from 9 a.m. - 4 p.m.

The **GIFT SHOP** is in need of help at the register for flexible days or as a substitute.

HUMAN RESOURCES requires help on all days except Tuesdays for light clerical work, answering phones and running errands.

INFORMATION DESK

Current Openings

Wednesday and Thursday nights from 4:30 - 8:00 p.m.

Wednesday and Thursday days from 12:30 - 4:30 p.m.

We are also in need of substitutes for all shifts. If you like Customer Service, this is the volunteer experience for you! We provide on-the-job training for the computer, phones and directional information.

The **Messenger Room** is in need of help between the hours of **8:00 a.m. - 4:30 p.m.** Volunteers aid in discharging patients, running errands, delivering patient mail and flowers, miscellaneous mailing projects, and sorting doctors' mail. Your help would be greatly appreciated, especially during those hours on Monday and Tuesday afternoons! **If any ADULT volunteers are interested in volunteering on Saturday mornings from 8 a.m. - 12 p.m. we would be thrilled to have you! We are unable to remain open if there is no adult supervision.**

PEDIATRICS volunteers would be greatly appreciated for the playroom on various days and times.

TUMOR REGISTRY needs data inputting, please report any afternoon during weekday hours.

The **VALERIE CENTER** is in need of clerical and filing help on Tuesdays any time between the hours of **9 a.m. and 3 p.m.**

If you are interested in volunteering in a specific department not mentioned, please feel free to call us. Volunteer requests are ongoing. If any of the listed positions are of interest to you, please contact **Sandi at 908-522- 2099 or Kristen at 908-522-2720.**

THANK YOU JULIE!



We would like to extend our heartfelt thanks to Auxiliary member **Julie Planck** for her contribution of a new piano to Overlook Hospital. This beautiful instrument is located in the Main Lobby and will continue to greet guests, patients and staff with music.

MORE VOLUNTEERS

THE NIFTY KNITTERS

The Nifty Knitters of Chatham, located at the Chatham Municipal Building, have donated this year alone over 1000 baby hats and over 60 baby blankets to the maternity department! These very prolific knitters (20+ strong) donate their time and talents to bring joy to new babies and their families.

The Nifty Knitters would greatly appreciate donations of washable double knit (DK) or sport weight yarn. Any colors are welcome! You can drop the yarn off in the Volunteer Office any day!

Please call Sandi at 908-522-2099 with any questions! Thank you!

JONES NEW YORK
COAT SALE...

Coats, Gloves, Hats, Jackets, Scarves,
Shawls & Sweaters

Petite – Regular – Plus Sizes

Wednesday, February 20

8:00 a.m. - 4:00 p.m.

Wallace Auditorium

Sponsored by Overlook Hospital Auxiliary
SH Twig #17

ONE SPECIAL VOLUNTEER *BLOOMS* BRIGHTLY AT OVERLOOK

In the hectic life of a hospital such as Overlook, there are many who go unnoticed each day, though their selfless efforts provide much-needed support. It is what sets our institution apart from so many others. In many capacities throughout the hospital, volunteers move with quiet efficiency as they perform duties often taken for granted.

The Gift Shop and *Bloom* is one area in particular that would not function as smoothly without the dedication of the many volunteers who selflessly give of their time. One such volunteer who deserves our appreciation is Bea Makara, affectionately known as Super Bea at *Bloom*. She can be found buzzing around the shop on Monday and Wednesday mornings.

She began volunteering at Overlook Hospital a year and a half ago. While attending a Volunteer Luncheon, she mentioned her fondness for flowers and was instantly recruited to work in the flower shop. She always brings with her an infectious laughter and wonderful sense of humor, while at the same time, making sure the flowers are cleaned and conditioned; the coffee is brewing; and the case is filled with her

signature bud vases. Her favorite flowers are roses and Lily-of-the-Valley. Bea loves the atmosphere of *Bloom* and says she learns something new every day. She has a passion for gardening and enjoys working on crafts, such as making wreaths, knitting and crocheting. She belongs to three knitting groups who create blankets and caps for newborn babies at Overlook.

Early in her marriage, she attended a professional design school and worked part-time at a flower shop in Roselle Park. Since retiring from her job in Customer Service at Schering Plough after 38 years, today she is busier than ever! In addition to her many activities, Super Bea is part of the Marriage Ministry at the Shrine of St. Joseph. She also works on the Tricky Tray baskets for the Shrine's Fun Festival in September and does whatever else is needed wherever she can. Bea's interests include reading mysteries and baking. She often shares her goodies with her co-workers at The Gift Shop and *Bloom*. How lucky can we get! Bea Makara makes life a little easier for those with whom she comes in contact. Visit Super Bea on Monday or Wednesday mornings and see for yourself.